

EASYStand®

6000 Glider

Owner's Manual



Table Of Contents ---

| | |
|----------------------------------|-------|
| Introduction | 1 |
| Safety Precautions | 2 |
| Assembly | 3-8 |
| Adjustments | 9-12 |
| Parts & Options | 13-22 |
| User Log | 23 |
| Specifications | 24 |
| Limited Warranty | 25 |

Introduction

Congratulations on your purchase of the EASYSTAND 6000 standing frame! We at Altimate Medical, Inc. have designed the EasyStand 6000 with your comfort and happiness in mind.

This manual is an integral part of your standing system and should be read completely and thoroughly by anyone that will be operating the unit.

This will ensure the EasyStand 6000 is assembled properly and used in the most beneficial manner.

AMI recommends an attendant be present when the EasyStand 6000 is being used.

Should any problem arise that you cannot solve by reading this manual, please contact your local dealer or call Altimate Medical, Inc. at 1-800-342-8968 or 507-697-6393. You can also email us at info@easystand.com.

It is important and necessary that you periodically inspect your EasyStand 6000 to assure it is in safe operating condition. Minor adjustments can be made by the operator. However, replacement of worn parts, major adjustments, or any other important corrections should be handled by an authorized dealer. Use only replacement parts approved by Altimate Medical, Inc. to ensure safety and performance.

The EasyStand 6000 should not be used by individuals with paralysis of the upper and/or lower body who have been confined to a bed or wheelchair for an extended period of time without first consulting a qualified physician.

Failure to consult a qualified physician prior to using the EasyStand 6000 could lead to severe medical problems. We recommend that a good standing program be established and supervised by a qualified registered physical therapist.

Date Purchased _____ Serial # _____

Safety Precautions

- The EasyStand 6000 is designed to accommodate individuals from 5'4" to 6'5" and up to 280 lbs. If you do not fit these specifications, Altimate Medical Inc. does not recommend the use of the EasyStand 6000.
- Be sure that all nuts and bolts are tightened securely. Check your EasyStand periodically to make sure everything is secure. A set of hex key wrenches is included.
- Altimate Medical Inc. recommends that you consult with a qualified therapist or physician prior to starting a standing program.
- Place your EasyStand 6000 on a sturdy, level surface.
- Use the EasyStand indoors only.

TRANSFERRING:

- For proper transfer techniques, please seek professional advice from your therapist or doctor before transferring.
- Always lock the wheel locks on your wheelchair before transferring.
- If you do not need assistance in transferring, position your wheelchair next to the EasyStand and flip the swing arm back. Slide over to the seat using the grab bars and position your feet in the foot plates. Secure the velcro calf straps and flip the swing away arms down.
- When transferring out of the EasyStand, pump the seat up so that it is equal to or higher than the seat you are transferring back into.

POSITIONING:

- Consult with your therapist for proper adjustments.
- Adjust the knee support in the seated position only.
- When in the standing position, the front pad should support your upper body and the top of the glide handles should be shoulder height.

STANDING:

- Please consult with your therapist or doctor before starting a standing program.

Assembly

1 Carefully remove the packaging to reveal your partially assembled Glider.

Note: *Some overseas shipments require additional assembly such as attaching the two base bars on the bottom of the unit. The angled bar attaches to the rear, casters toward the front.*



2 For shipping reasons, the seat depth button will not be visible when you receive your Glider. Loosen the knob on the seat depth adjustment tube and pull up on the back until the seat button clicks into the blue ring. Depress the button and continue this process until you reach the green ring.



3 Slide the round follow tube from the seat into the follow tube on the base. Continue until you hear the spring button click. Both buttons should be in the green ring at this time.



4 Depending on what color you have chosen on the square seat depth tube, there are two to three different back angles available on the round tube.



5 Attach the actuator handle to the actuator receiver. Use the holes that will align the handle (the holes are placed so the handle is near the vertical position).

Tighten securely.

Note: For left-handed use, remove the cap on the opposite side of pump shaft.



6 Gently pull back on the handle as you apply pressure on the back of the seat to lower the seat.



7 When adjusting be sure to match the same color on the seat depth (*square tube*) and back angle (*round tube*). Here we are both on yellow. Tighten the knob on the seat depth tube after adjustment.

Note: *If colors do not match, damage to the unit will occur when going to the standing position.*

Warranty is voided.



8 Loosen the knob and slide the front pad into the upper bracket.

Tighten securely.

Note: *The pad can be inverted for preference. We advise starting with the tall end up as shown.*



9 Loosen the knobs on the vertical tubes and attach the glide handles.

Tighten securely.



10 The optional side supports attach to the grab bar.

Remove caps, loosen the knob, adjust support, and tighten securely.



11 The Glider comes shipped with the resistance cylinders in a static position. This is usually a good way to begin use.

To use the resistance cylinders, pull on the pin until it disengages from the hole.



12 Set the resistance on the cylinder to “1”, which is the least resistance.



13 Pull up slightly on the cylinder pin and align it with the hole on the kneepad tube. Insert the pin completely through the tube.



14 If you ordered the table option, remove the grab bar/front pad bracket and insert the table sleeve. Replace the standard knob with the longer studded knob, be sure the slot lines up with the tightening knob.



15 Remove the glide handles and insert the table with frontpad into the bracket. If desired, re-insert glide handles.

Tighten securely.

Note: Engage resistance cylinders and turn to maximum resistance to reduce unwanted leg motion.



16 If you ordered the Glider with a high back extension, it will be pre-installed.

If you order the high back extension later, install it by removing the back and the caps. Slide the high back into the back tubes (*you may have to tap with a rubber hammer*). Replace the bolts.

Tighten securely.



17 If you ordered the Glider with a Roho® seat, it will be pre-installed.

To replace your present seat with a Roho® seat, pump the seat to the standing position, remove the bolts, and install the new seat.

Tighten securely.



Adjustments

Moving

To move the Glider, place your foot on the middle of the front brace and pull back on the handles with equal tension. The unit will tip onto the transport wheels and become mobile. Let it down in the same fashion, with your foot on the front brace.

Note: *If the floor under the Glider is not level, adjust the level glides under the unit by turning them in or out.*



Seat Height

Never adjust the seat height when sitting in the unit.

Seat height should be adjusted so that the knee joint is slightly lower than the hip.

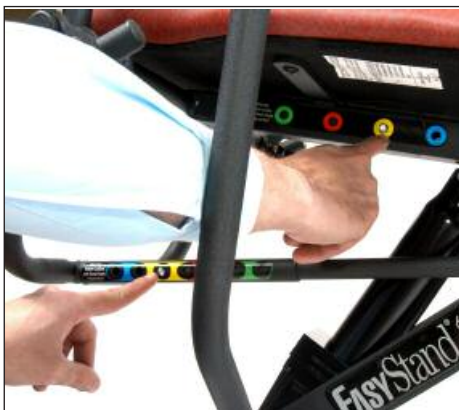
To adjust the seat height, loosen the knob under the seat, lift seat to desired height and tighten securely.



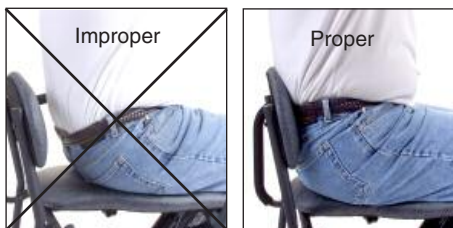
Seat Depth

To adjust the seat depth, depress the button on the square tube and move the back to desired position. Then adjust the round follow tube to match the color on the seat depth tube. Tighten the knob on the seat depth tube after adjustment.

Note: If colors do not match, damage to the unit will occur when going to the standing position. Warranty is voided.



Adjust the back so that the user is sitting upright in the seated position.



Kneepad Height

Slide knees forward into the center of kneepads. Adjust height of kneepad if necessary.

The kneepad has six adjustments in height. To adjust the kneepad, remove the hex key bolts from the kneepad. They are independently adjustable. Never adjust kneepads while in the standing position.



Transferring and Standing

Lift the swing arms up before transferring.

Grab the calf strap ring and attach the velcro onto the kneepad. The ring is used for ease of attaching and removing. It is not used as a strap attachment.

Important: *Always seek professional advice from your therapist or doctor before transferring.*



Position the optional side supports and lift yourself to standing by pumping the actuator handle with short easy strokes.

Note: *You can stop and rest at any time during the lifting process.*



To return to the seated position, simply push back on the actuator handle and you will gently descend to a seated position.



Hydraulic Pump Usage

- An initial break-in period of approximately 50-100 full cycles is normal for the hydraulic unit. You may experience a squealing noise or a less-than-smooth forward stroke. The very close fit of its mating parts give each pump its own break-in “feel” and signature noise.
- If the pump is leaking oil, call your local AMI Dealer for a replacement. The serial number will be needed.
- Do not exert excessive force on the pump handle or use the pump handle to move your EasyStand around. This may cause damage to the pump handle and/or the pump mechanism and will void any warranty.
- User maintenance is not required or recommended on the hydraulic pump. Never apply lubricant, household oil, grease, or a similar product to any part of the unit. Some compounds may react with the seals used in the manufacture of this product. This may damage the unit and will void any warranty.
- Do not exceed the rated weight capacity of the equipment for which this hydraulic unit is used on (the weight limit for the EasyStand 6000 is 280 lbs).
- If your EasyStand was shipped to you during or exposed to a temperature of less than 50 degrees Fahrenheit, you must allow the hydraulic unit to warm up to room temperature before any use. Failure to follow this step could damage the unit and render it inoperable.
- It is sometimes not necessary to push the pump handle all the way back to lower the seat. If you have difficulty getting the seat to lower, try pushing the handle back into different positions.
- If the unit is in the standing position and unoccupied, it is necessary to apply pressure to the seat of the unit while pushing the pump handle back.

Purging the Hydraulic Pump

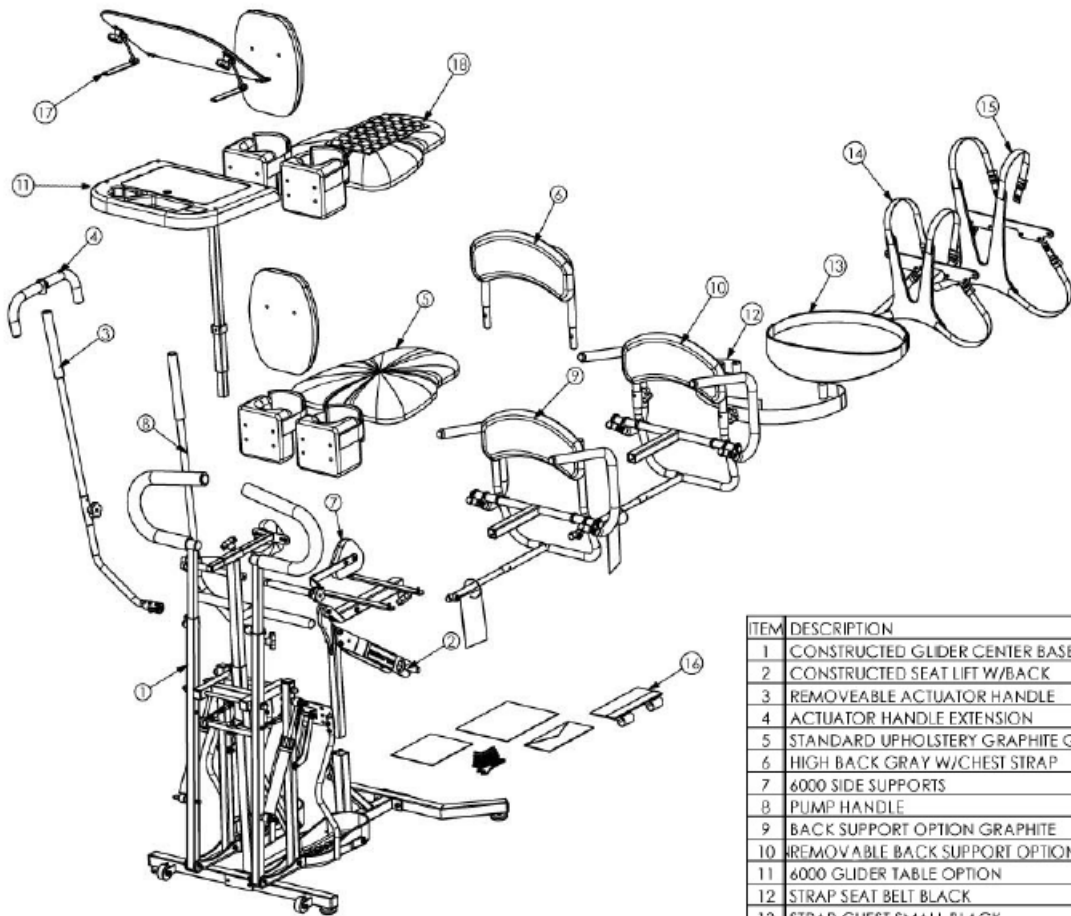
The hydraulic pump on your EasyStand has a high probability of getting air trapped in the internal workings of the unit. This is usually caused by in-transit handling and is quite normal. Please follow the simple steps below, as manual hydraulic systems may never operate properly unless the entrapped air is correctly purged. The unit must be at room temperature for this procedure.

- 1. Slowly pump the handle until the full extension is reached.**
- 2. Now continue pumping the handle slowly for an additional 10 strokes. This will properly purge the system.**

Maintenance and Storage

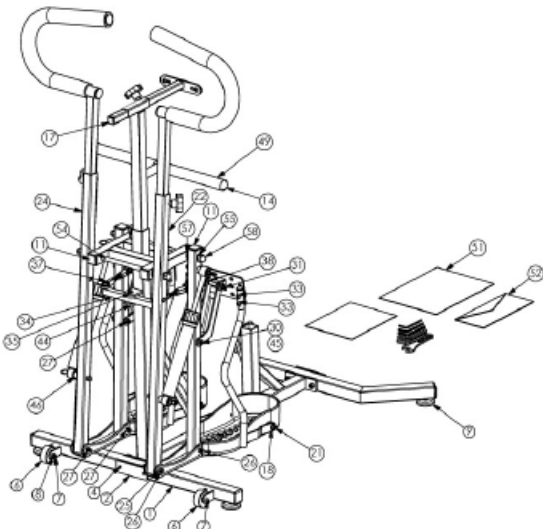
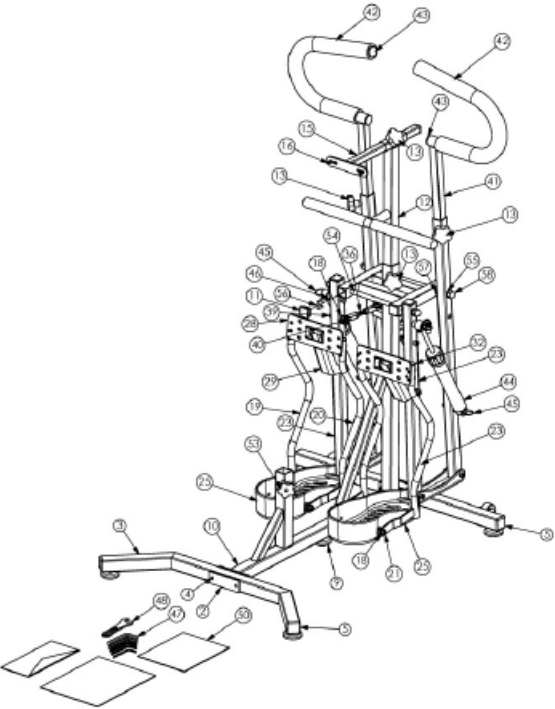
- If cleaning becomes necessary, a damp sponge should give acceptable results.
- Never use compressed air on the unit.
- Periodically check your EasyStand to make sure all nuts, bolts, and adjustable parts are tightened securely.
- Store your EasyStand indoors at room temperature.

6000 Glider Parts Overview



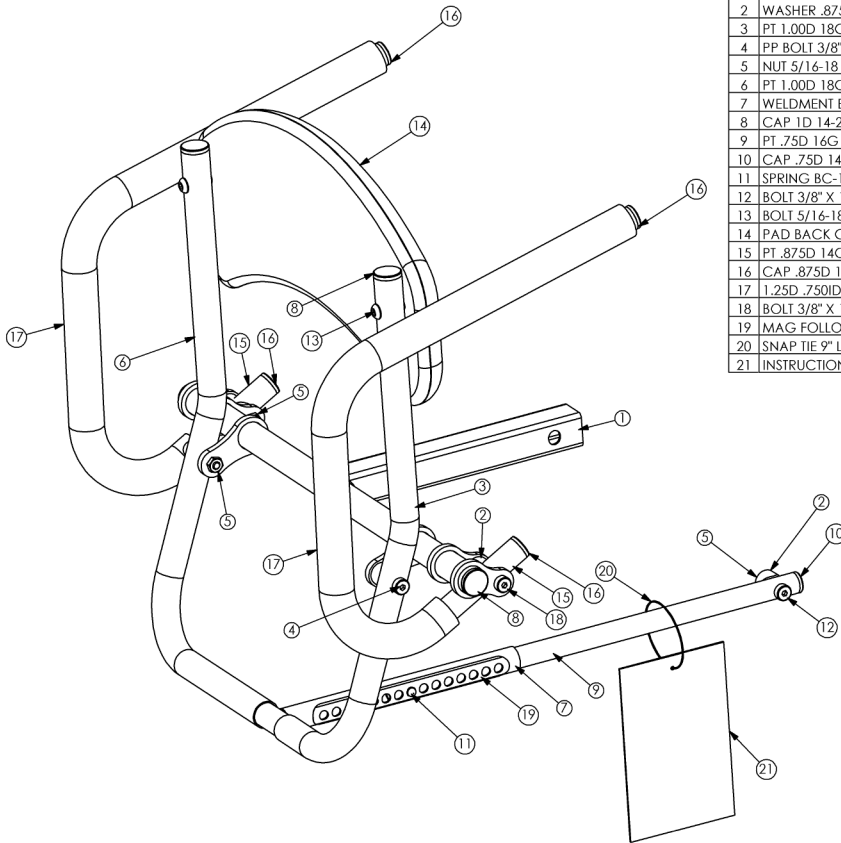
| ITEM | DESCRIPTION |
|------|--|
| 1 | CONSTRUCTED GLIDER CENTER BASE FRAME |
| 2 | CONSTRUCTED SEAT LIFT W/BACK |
| 3 | REMOVEABLE ACTUATOR HANDLE |
| 4 | ACTUATOR HANDLE EXTENSION |
| 5 | STANDARD UPHOLSTERY GRAPHITE GRAY |
| 6 | HIGH BACK GRAY W/CHEST STRAP |
| 7 | 6000 SIDE SUPPORTS |
| 8 | PUMP HANDLE |
| 9 | BACK SUPPORT OPTION GRAPHITE |
| 10 | REMOVABLE BACK SUPPORT OPTION GRAPHITE |
| 11 | 6000 GLIDER TABLE OPTION |
| 12 | STRAP SEAT BELT BLACK |
| 13 | STRAP CHEST SMALL BLACK |
| 14 | MEDIUM CHEST VEST OPTION |
| 15 | LARGE CHEST VEST OPTION |
| 16 | POUCH TOOL |
| 17 | TABLE TILT BLACK MOLDED GRAPHITE GRAY |
| 18 | GLIDER ROHO GRAPHITE GRAY UPHOLSTERY |

6000 Glider Parts Detail



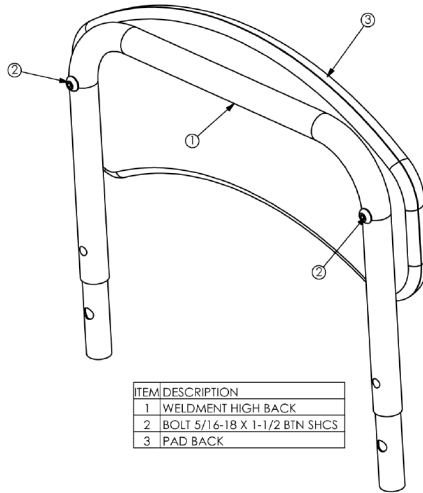
| ITEM | DESCRIPTION | ITEM | DESCRIPTION |
|------|--------------------------------------|------|-------------------------------------|
| 1 | WELDMNT BASE TUBE FRONT | 53 | KNOB 5/16"-18 X 3/4 ZC 5 PT |
| 2 | PT .25H 1.50W 4.5L | 54 | STUD-PIVOT, MACHINED |
| 3 | WELDMNT REAR BASE TUBE | 55 | WASHER-SHOULDER, NYLON |
| 4 | BOLT 3/8-16 X 2 SHCS | 56 | RETAINING TAB |
| 5 | 1.50H 1.50W 14-20GA BLK SQ | 57 | 1.00 OD X .50 ID X .062 T |
| 6 | WHEEL 2" DIA BLACK PLASTIC | 58 | 1/2-13 SELF LOCKING-STAINLESS STEEL |
| 7 | BOLT 1/4-20 X 1 3/4 SHCS | | |
| 8 | NUT 1/4-20 NYL INS L/N HIGH | | |
| 9 | GLIDE 3/8"-16 X 1" LEVEL GLIDE | | |
| 10 | WELDMNT CENTER BASE FRAME 6000 | | |
| 11 | CAP 1.25H 1.25W 10-14GA BLK SQ | | |
| 12 | WELDMNT VERTICAL ADJUST GRAB HANDLE | | |
| 13 | KNOB 5/16"-16 X 5/8 ZC 5 PT | | |
| 14 | CAP 1D 14-23 GA BLK BALL CAP | | |
| 15 | WELDMNT CHEST PAD ADJUSTMENT TUBE | | |
| 16 | BOLT 5/16-18 X 3/4 BTN SHCS | | |
| 17 | CAP .875H .875W 14-20GA BLK SQ | | |
| 18 | WASHER 3/8"ID X 3/4"OD NYLON BLACK | | |
| 19 | WELDMNT VERTICAL KNEE SUPPORT LH | | |
| 20 | WELDMNT VERTICAL KNEE SUPPORT RH | | |
| 21 | BOLT 3/8" X 3/8" SHOULDER BOLT | | |
| 22 | WELDMNT FRONT VERTICAL GLIDE TUBE LH | | |
| 23 | PT 12G 1.25H 1.25W 25.5L | | |
| 24 | WELDMNT FRONT VERTICAL GLIDE TUBE RH | | |
| 25 | PT 3.0H 6.375W 22.75L | | |
| 26 | BOLT 3/8" X 2" SHOULDER BOLT | | |
| 27 | NUT 5/16-18 JAM NYL INS L/N | | |
| 28 | PT 1.224H 3.00W 8.00L | | |
| 29 | PT 2.813H 1.765W 7.851L | | |
| 30 | BOLT 3/8" X 1 3/4" SHOULDER BOLT | | |
| 31 | BOLT 3/8" X 2 1/4" SHOULDER BOLT | | |
| 32 | CAP .75D 14-20 GA BLK RND | | |
| 33 | BOLT 5/16-18 X 1 BTN SHCS | | |
| 34 | PT .75H .75W 8.50L | | |
| 35 | BOLT 3/8" X 1" SHOULDER BOLT | | |
| 36 | BALL JOINT ASSEMBLY | | |
| 37 | BOLT 3/8" X 1/2" SHOULDER BOLT | | |
| 38 | NYLON SHOULDER WASHER | | |
| 39 | BOLT 3/8-16 X 2-1/4 SHCS | | |
| 40 | NUT 3/8-16 JAM NYL INS L/N | | |
| 41 | WELDMNT VERTICAL HANDGLIDE | | |
| 42 | GRIP 1.50D 1.00ID 24.00L FOAM | | |
| 43 | CAP 1.25D 14-23 GA BLK RND | | |
| 44 | ASSY SHOCK/CYLINDER | | |
| 45 | PIN 1/2" X 3 1/4" QUICKPIN | | |
| 46 | SPACER .75D .50ID .50L RUBBER | | |
| 47 | UNIVERSAL TOOLKIT | | |
| 48 | TOOL MULTI-WRENCH | | |
| 49 | GRIP 88 ID 1.13 OD 9.00 | | |
| 50 | MANUAL 6000 GLIDER | | |
| 51 | WARRANTY REGISTRATION CARD | | |
| 52 | WARRANTY ENVELOPE | | |

Back Assembly



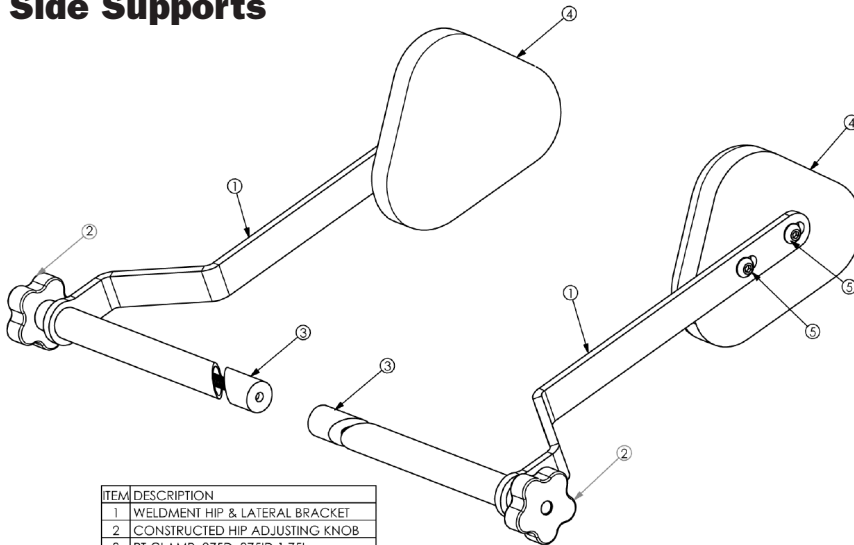
| ITEM | DESCRIPTION |
|------|------------------------------------|
| 1 | WELDMENT ARM W/BACK |
| 2 | WASHER .875 OD .375 ID COVED |
| 3 | PT 1.00D 18G 4.812H 3.375W 18.765L |
| 4 | PP BOLT 3/8" X 1 1/4" SHOULDER |
| 5 | NUT 5/16-18 JAM NYL INS L/N |
| 6 | PT 1.00D 18G 9.375H 3.393W 18.765L |
| 7 | WELDMENT BACK PIVOT |
| 8 | CAP 1D 14-23 GA BLK RND |
| 9 | PT .75D 14G 16.250L |
| 10 | CAP .75D 14-20 GA BLK RND |
| 11 | SPRING BC-150-D W/DOME HEAD |
| 12 | BOLT 3/8" X 1" SHOULDER BOLT |
| 13 | BOLT 5/16-18 X 1-1/2 BIN SHCS |
| 14 | PAD BACK GRAPHITE GRAY |
| 15 | PT .875D 14G 12.187H 15.50L |
| 16 | CAP .875D 14-20 GA BLK RND |
| 17 | 1.25D .750ID 24.00L |
| 18 | BOLT 3/8" X 1 3/4" SHOULDER BOLT |
| 19 | MAG FOLLOWING ARM LABEL |
| 20 | SNAP TIE 9" LG |
| 21 | INSTRUCTIONAL PHAMPLET |

High Back Extension

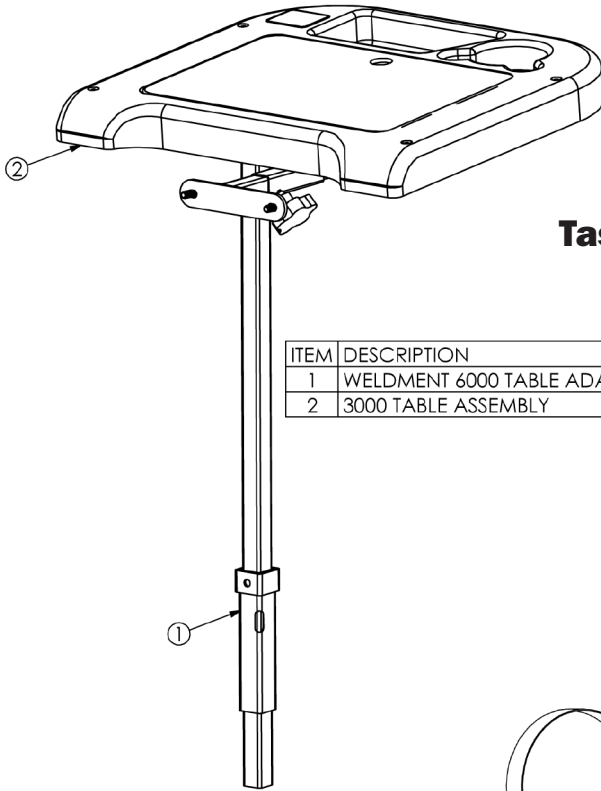


| ITEM | DESCRIPTION |
|------|-------------------------------|
| 1 | WELDMENT HIGH BACK |
| 2 | BOLT 5/16-18 X 1-1/2 BTN SHCS |
| 3 | PAD BACK |

Side Supports



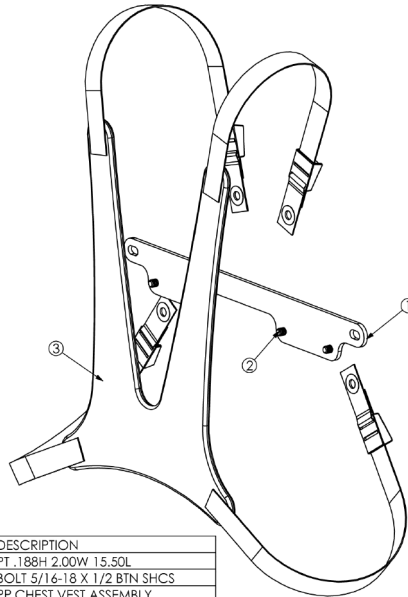
| ITEM | DESCRIPTION |
|------|--------------------------------|
| 1 | WELDMENT HIP & LATERAL BRACKET |
| 2 | CONSTRUCTED HIP ADJUSTING KNOB |
| 3 | PT CLAMP .875D .375ID 1.75L |
| 4 | PAD HIP LATERAL |
| 5 | BOLT 5/16-18 X 3/4 BTN SHCS |



Task Table

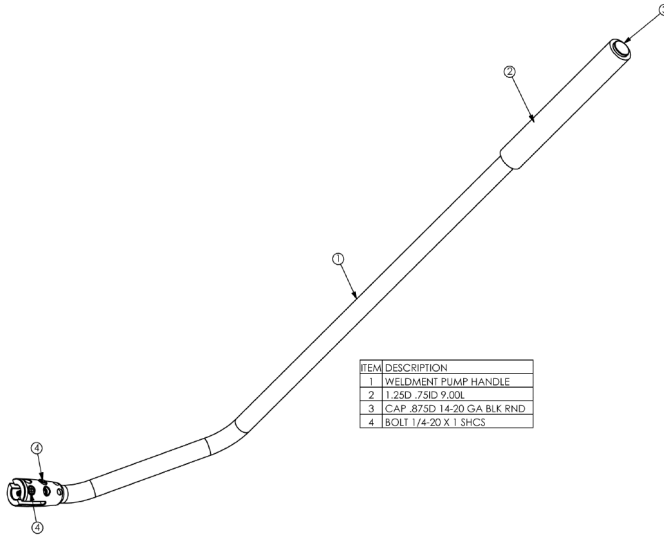
| ITEM | DESCRIPTION |
|------|-----------------------------|
| 1 | WELDMENT 6000 TABLE ADAPTER |
| 2 | 3000 TABLE ASSEMBLY |

Chest Vest



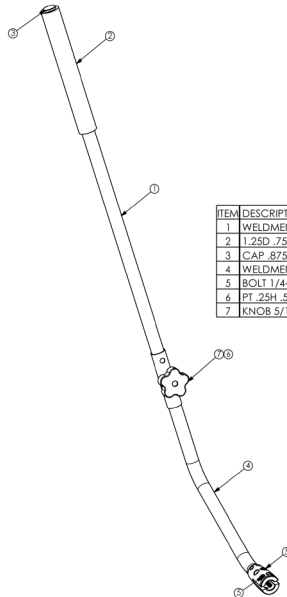
| ITEM | DESCRIPTION |
|------|-----------------------------|
| 1 | PT .188H 2.00W 1.5.50L |
| 2 | BOLT 5/16-18 X 1/2 BTN SHCS |
| 3 | PP CHEST VEST ASSEMBLY |

Actuator Handle



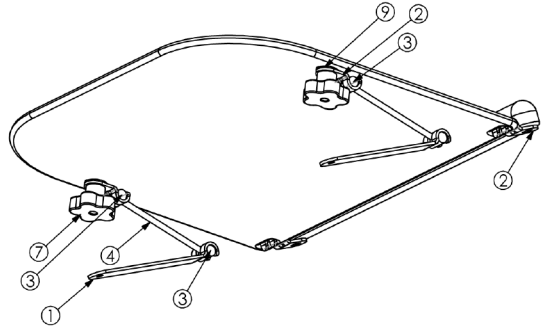
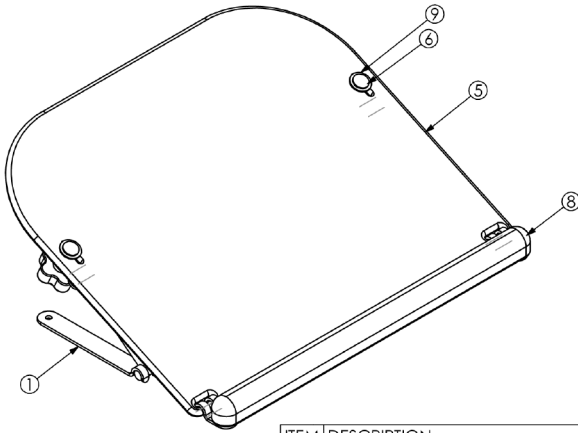
| ITEM | DESCRIPTION |
|------|----------------------------|
| 1 | WELDMENT PUMP HANDLE |
| 2 | 1.25D .75ID 9.00L |
| 3 | CAP .875D 14-20 GA BLK RND |
| 4 | BOLT 1/4-20 X 1 SHCS |

Removable Actuator Handle



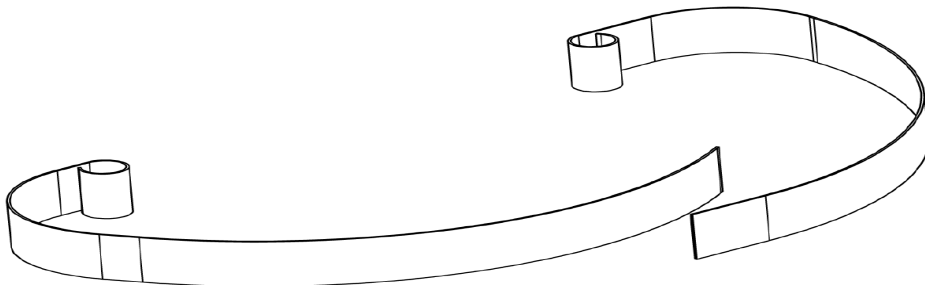
| ITEM | DESCRIPTION |
|------|-----------------------------|
| 1 | WELDMENT UPPER HANDLE |
| 2 | 1.25D .75ID 9.00L |
| 3 | CAP .875D 14-20 GA BLK RND |
| 4 | WELDMENT LOWER HANDLE |
| 5 | BOLT 1/4-20 X 1 SHCS |
| 6 | PT .25H .563W 3.00L |
| 7 | KNOB 5/16"-18 X 3/4 ZC 5 PT |

Tilt Table

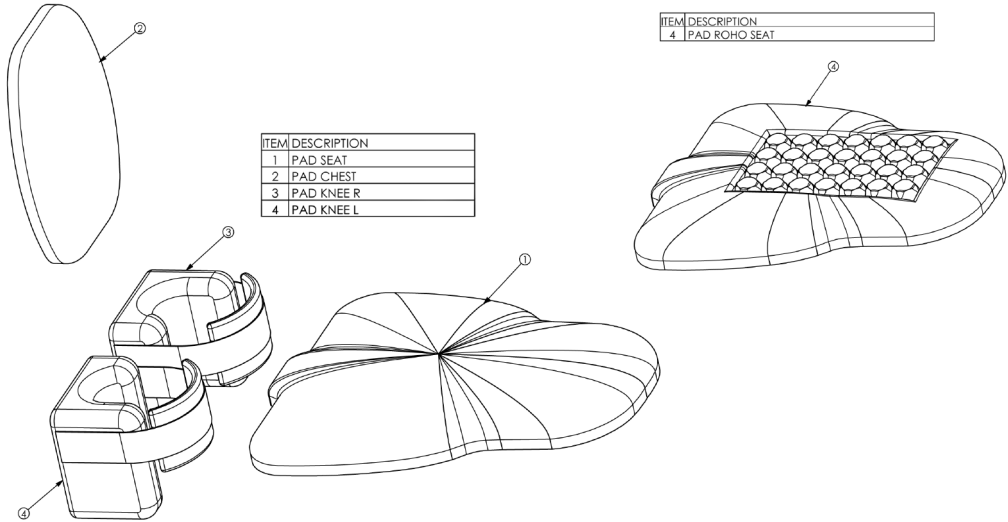


| ITEM | DESCRIPTION |
|------|---------------------------------------|
| 1 | .375H 1.00W 6.874L |
| 2 | .375H 1.00W 2.00L |
| 3 | .500D .875L |
| 4 | THREADED ROD 1/4-20 X 5 1/4 BOTH ENDS |
| 5 | TABLE .375H 20.00W 16.00L |
| 6 | 5/16-18UNC X 1.00L CARRIAGE BOLT |
| 7 | KNOB 5/16-18 W/FEMALE 5 PT BLK |
| 8 | PAD BLACK MOLDED TABLE |
| 9 | WASHER 1/2 ID X 1.00 OD .062H NYL |

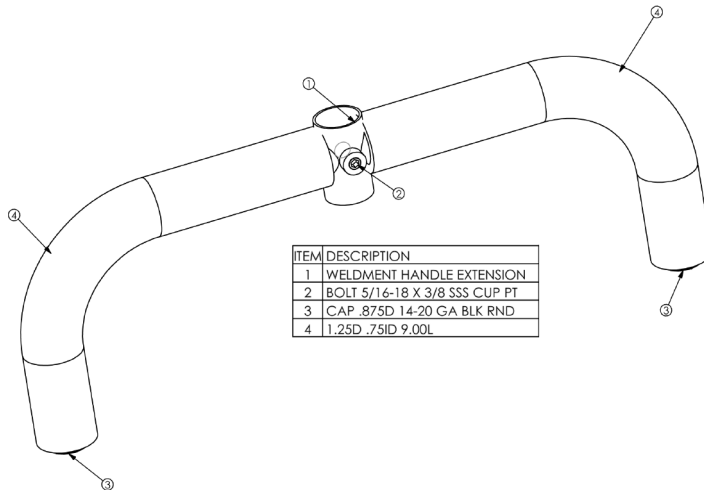
Seat belt



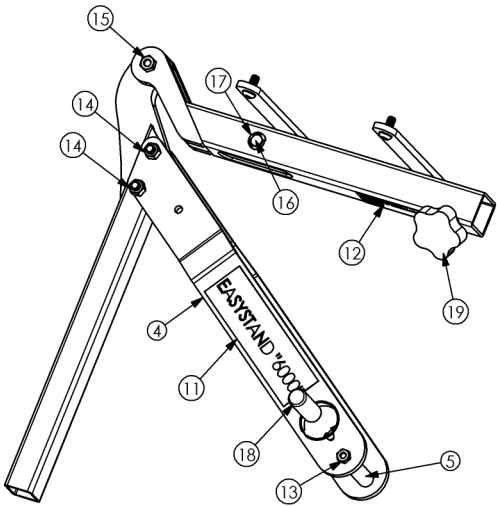
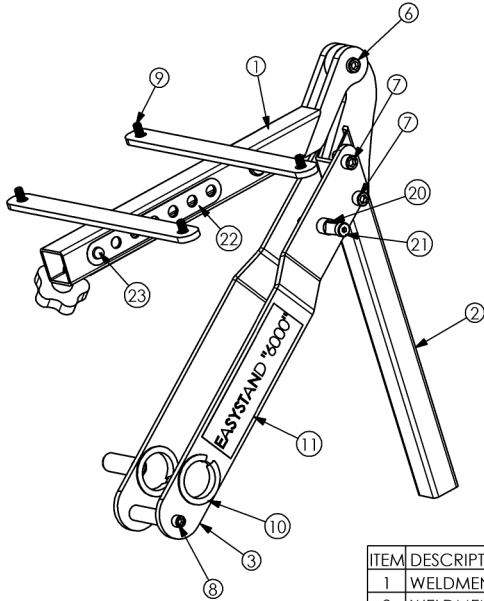
Upholstery



Actuator Handle Extension



Seat Lift Bracket



| ITEM | DESCRIPTION |
|------|-----------------------------------|
| 1 | WELDMENT SEAT BRACKET |
| 2 | WELDMENT VERTICAL SEAT TUBE ASSM. |
| 3 | PT .930H 2.125W 17.772L |
| 4 | PT .930H 2.125W 17.772L |
| 5 | RM .625D .375ID 2.50L |
| 6 | BOLT 3/8-16 X 1-1/4 SHCS |
| 7 | BOLT 3/8-16 X 2-1/4 SHCS |
| 8 | BOLT 5/16-18 X 3-1/4 SHCS |
| 9 | BOLT 5/16-18 X 3/4 BTN SHCS |
| 10 | NYLINER #2717A |
| 11 | EASYSTAND 6000 LABEL |
| 12 | SERIAL NO LABEL |
| 13 | NUT 5/16-18 JAM NYL INS L/N |
| 14 | NUT 3/8-16 NYL INS HIGH NUT |
| 15 | NUT 3/8-16 JAM NYL INS L/N |
| 16 | CLEVIS PIN .472" D X 1.655"L |
| 17 | E-RING ER-43 |
| 18 | CAP .625ID 2.00L BLK |
| 19 | KNOB 5/16"-16 X 5/8 ZC 5 PT |
| 20 | PT .625D .375ID .462L |
| 21 | BOLT 3/8 X 1 1/2 SHOULDER |
| 22 | MAG SEAT DEPTH LABEL |
| 23 | SPRING RD-2195 W/DOME HEAD |

User Log

photocopy this page for a long term record of your standing progress.

| Client Name | Date | Start Time | End Time | Total Time |
|-------------|------|------------|----------|------------|
| | | | | |
| | | | | |
| | | | | |
| | | | | |
| | | | | |
| | | | | |
| | | | | |
| | | | | |
| | | | | |
| | | | | |
| | | | | |
| | | | | |
| | | | | |
| | | | | |
| | | | | |
| | | | | |
| | | | | |
| | | | | |
| | | | | |
| | | | | |

Specifications

| | | |
|--|-------------------|-----------|
| Height Range | 5'4"-6'5" | 162-195cm |
| Weight Limit | 280 lbs. | 127kg |
| Seat Depth Range (from front of seat) | 16"-23" | 41-59cm |
| Seat Height from Floor (transfer height) | 21"-27" | 53-69cm |
| Seat to Footplate Range | 17.5"-23.5" | 45-59cm |
| Front pad Depth Range (when standing) | 5"-14" | 13-36m |
| Glide Handles Height Range (from foot plates) | 42"-58" | 107-147cm |
| Basic Height from Seat | 11" | 28cm |
| Kneepad to Footplate Range (to center of kneepad) | 18"-22" | 46-56cm |
| Base Dimensions | 30" x 42" | 76x107cm |
| Weight of Basic Unit | 141 lbs. | 64kg |
| Frame Color | Black Powder Coat | |
| Standard Upholstery Color | Graphite Gray | |
| Calf Strap (knee circumference) | 12"-20" | 31-51cm |

Limited Warranty

This warranty is extended only to the original purchaser/customer (or dealer non consumer who does not buy or resell). Altimate Medical, Inc. (AMI) warrants the EasyStand 6000 against defects in materials and workmanship as listed below.

- Steel Frames - 5 year warranty
- Hydraulic Actuator - 2 year warranty
- Upholstered components, plastic pads, rubber parts, painted surfaces, bearings and other parts not specifically identified above - 90 day warranty

The warranty period commences for the consumer on the purchase date from the seller/dealer. If the product is rented or otherwise not sold to a consumer, the warranty period commences from the date of invoice from AMI. Any product proven to AMI satisfaction to be defective and within warranty period, shall be repaired or replaced at AMI's option.

AMI'S SOLE OBLIGATION AND YOUR EXCLUSIVE REMEDY UNDER THIS WARRANTY SHALL BE LIMITED TO SUCH REPAIR AND/OR REPLACEMENT. This warranty does not include any labor charges incurred in replacement parts installation. Freight charges to factory are at the expense of consumer to seller. Return freight charges will be prepaid by AMI. For warranty service, please contact the authorized dealer from whom you purchased your AMI product. In the event you do not receive satisfactory warranty service, please write directly to AMI at the address below. Do not return products to our factory without prior authorization.

LIMITATIONS AND EXCLUSIONS: The foregoing warranty shall not apply to serial numbered products if the serial number has been removed or defaced. Products subject to negligence, abuse, misuse, improper operation, improper maintenance, improper storage, or damages beyond AMI's control are not covered by this warranty, and that evaluation will be solely determined by AMI. The warranty shall not apply to problems arising from normal wear or failure to follow instructions. The warranty will be void if parts not manufactured by AMI or parts not complying with original equipment specifications are added to an AMI product.

THE FOREGOING WARRANTY IS EXCLUSIVE AND IN LIEU OF ALL OTHER EXPRESS WARRANTIES. AMI SHALL NOT BE LIABLE FOR ANY CONSEQUENTIAL OR INCIDENTAL DAMAGES WHATSOEVER.

AMI maintains a policy of continual product improvement and reserves the right to change features, specifications, and prices without prior notification. Check with AMI for latest information.

Altimate Medical, Inc., P.O. Box 180, 262 W. 1st St., Morton, MN 56270 USA
Phone: 507•697•6393 Fax: 507•697•6900 1 800•342•8968
www.easystand.com info@easystand.com
Revised April, 2004

Environmental Issues

After life of the product:

- Recycle in accordance with the recycling codes of your country.
- Recycle all metal parts.
- Plastic parts should be disposed of or recycled according to the directive in your country.
- Please inquire at your local disposal management and recycling center for local codes.
- Return hydraulic actuator to Altimate Medical, Inc.



EasyStand products are manufactured by Altimate Medical, Inc. A small company with a big heart, based out of Morton, Minnesota, Altimate Medical is proud to have been helping people stand for fifteen years. If you have any stories or comments about standing please write us at the address below.

Thank you.

AltimateMedical

P.O. Box 180
262 West 1st St
Morton, MN 56270 USA

Toll Free: 800.342.8968 or 507.697.6393
Fax Free: 877.342.8968 or 507.697.6900
email: info@easystand.com
www.easystand.com



Standing technology should only be used under the guidance of a physician with recommendations for standing program protocol and any medical precautions. Standing programs should be monitored by the attending therapist. AMI maintains a policy of continual product improvement and reserves the right to change features, specifications, and prices without prior notification. Check with AMI for latest info.

FORM MAN6 0404 Copyright © 2004 Altimate Medical, Inc. All rights reserved. Printed in the U.S.A.